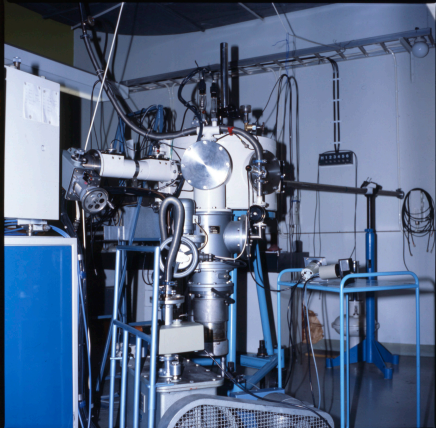


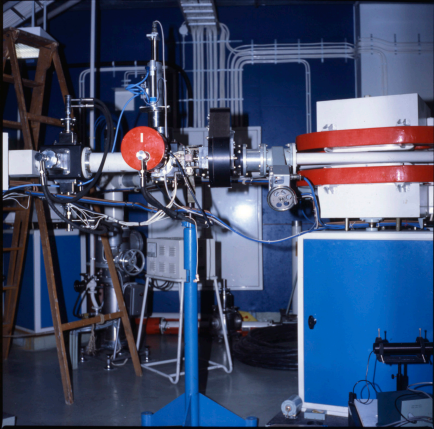
KODAK SAFETY FILM 6036



↑

KODAK SAFETY FILM 6036

KODAK S



2  
↑

3

3 ←



KODAK SAFETY FILM 803E

E1A 111W 803E

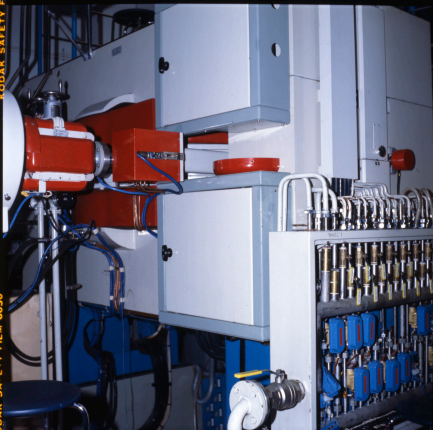
KODAK SAFETY FILM 6036



6 3 2 4  
↑ 4

KODAK SAFETY FILM 6036

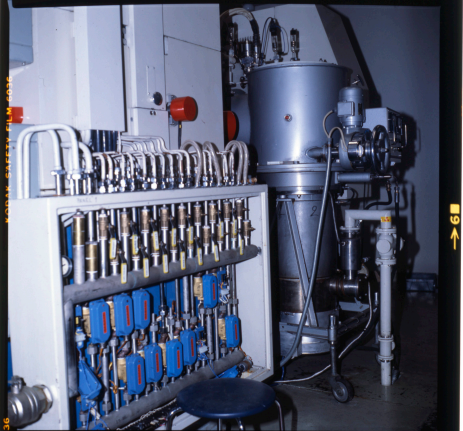
KODAK SAFETY FILM



5  
↑

KODAK SAFETY FILM 6036

6036



6036

KODAK SAFETY FILM 2032

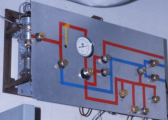
KODAK



71

KODAK SAFETY FILM CASE

SAFETY FILM CASE



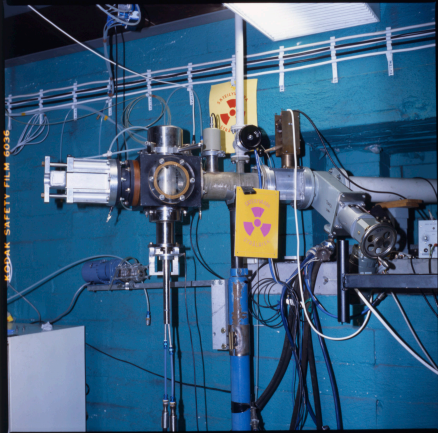
Three gas cylinders are visible. The leftmost is a tall brown cylinder labeled "HELIUM-3". The middle one is a shorter brown cylinder labeled "GEM". The rightmost is a tall green cylinder. Each cylinder is equipped with pressure gauges and valves.

A control console with two analog meters at the top. Below the meters are several knobs and switches. At the bottom of the console is a panel with a row of buttons, including a prominent red one.



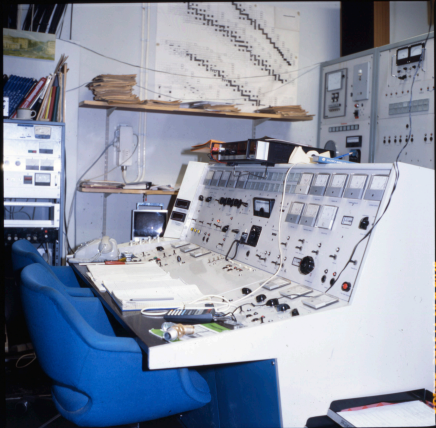


KODAK SAFETY FILM 6036



001

↑  
101



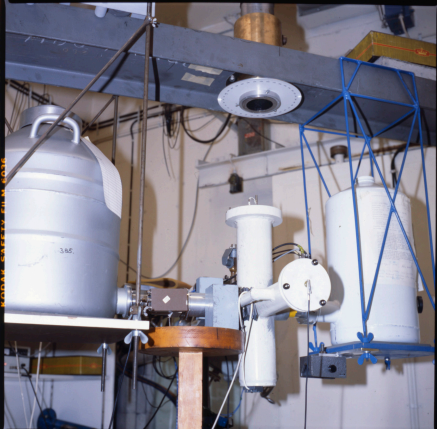
↑  
101

KODAK SAFETY FILM 6036



二二  
↑

KODAK SAFETY FILM 8036



→ 12